

UNICEF Republic of Guinea
February 2011

FIRST INTERIM UTILIZATION REPORT SUBMITTED TO THE FAST TRACK INITIATIVE SECRETARIAT



UNICEF/GUINEA/2011/koko Shimizu

Education for All Fast Track Initiative: Guinea's Education Sector Plan Activities

PBA : SC/2010/0648-00

Reporting Period: September 2010- February 2011

For every child
Health, Education, Equality, Protection
ADVANCE HUMANITY

unicef 

Interim Utilization Report No.1

Contribution Summary

Country/ Region	Guinea/ WCARO
Programme Name	Education for All Fast Track Initiative: Guinea's Education Sector Plan Activities
PBA Reference	SC/2010/0648-00
Total Contribution	US\$ 24,000,000
Recovery Cost	US\$ 1,569,600
Programmable Amount	US\$ 22,430,400
Total Funds used to date	US\$ 3,357,380.38 (15.93% of total programmable amount)
Balance	US\$ 18,857,019.62
Project Period	September 2010 - December 2012
Report Due Date	28 February 2011
Reporting Period	From 16 September 2010 to 28 February 2011
Project Objectives	To contribute to the implementation of the Education Sector Programme with the goal of reaching universal primary education through enhanced access and quality in the education sector, and in particular through immediate actions to combat against the declining education indicators observed since 2007.
Target Population	<p>Primary beneficiaries</p> <ul style="list-style-type: none"> • At least 44,000 pupils in 991 newly constructed classrooms of 311 primary schools; • At least 2,400 pre-school children at 30 Community Education Centers; • 120 ECD educators ; • 8 Regional Inspections of Education; 38 Prefectural Directions of Education; and 416 Delegations for Primary Education (at sub-prefecture level); • 50,000 adolescents and adults through literacy program. <p>Secondary beneficiaries</p> <ul style="list-style-type: none"> • 100% of primary and secondary school students in Guinea; • Local communities and authorities.
Geographic Focus area	National
Project Partners	Main implementing partners are the: Ministry of Pre-University Education; Ministry of Social Affairs and Promotion of Women and Childhood (in charge of pre-school education); Ministry of Literacy and the Promotion of National Languages; and national and international NGOs such as PLAN Guinea. Collaborating partners are technical and financial partners such as GiZ, KfW, AFD and the World Bank.
UNICEF Contact(s)	<p>Mr. Julien Harneis, Representative Email: jharneis@unicef.org Telephone: +224 62 66 34 52</p> <p>Mr. Felix Acebo, Deputy Representative Email: fackebo@unicef.org Telephone: +224 68 68 78 12</p> <p>Mr. Gervais Havyarimana, Chief, Education Programme Email: jhavyarimana@unicef.org Telephone: +224 62 35 02 95</p> <p>Ms. Ikuko Shimizu, PSE/FTI Project Manager Email: ishimizu@unicef.org Telephone: +224 62 35 02 98 UNICEF Guinea, BP 222, Conakry, Guinea Tel : + 224 62 66 34 10</p>

Table of Content

Contribution Summary

Executive Summary

List of Acronyms

No table of contents entries found.

ANNEXES

1. List of PAAB Indicators.....	12
2. Implementation Plan, Non-construction activities – 2011.....	16
3. Implementation Plan, Construction activities- 2011.....	17
4. Financial Utilization Report.....	18

EXECUTIVE SUMMARY

In Guinea today, more than 54 per cent of the people live below the poverty line among which 8.2 per cent are extremely poor in Guinea (2007)¹. More than 70 per cent of the population lives in the rural areas where access to education service is unavailable or limited, and its quality inadequate.

During the past two years of political instability, all social sectors including education suffered from declining quantity and quality of services. This decline was sharper in rural areas, resulting in the deterioration of education indicators on almost every fronts—access, quality and management capacity.

The Education Sector Programme (PSE) 2008-2015 was challenged by this political context as it lost the opportunity of financing through the Fast Track Initiative (FTI)'s Calaytic Funds since its validation in 2008. The restructured FTI Funds was partially transferred to UNICEF as a Supervising Entity (US\$ 24 million) in September 2010 for the implementation of five components of activities defined in the PSE through December 2012.

A team of nine staff was put in place within UNICEF Guinea to manage the Funds and provide technical support to implement projects. Despite continuing political instability of the country and limited capacity of the Government in a result-based planning and management, activities have started under all five components.

Key progresses made are:

- All Regional Inspections of Education (IRE) and Prefectural Directions of Education (DPE)/ Communal Direction of Education (DCE) elaborated Annual Budgeted Action Plans, of which 74 per cent have started implementing the Plans through FTI funds.
- All primary schools in the country were provided with the revised Implementation Guideline on the Subventions to Schools and School Delegations for Elementary Education (DSEE), and elaborated School Improvement Plan (PAE) to be financed through school grants (subventions).
- Tendering for NGOs to implement the literacy project was launched.
- A model school validated; fourteen firms for primary school construction and two engineering firms were pre-selected.
- Construction sites of primary schools and Community Education Centres (CECs) for pre-primary education were validated.

To date, 15.93% or US\$ 3,573,380.38 of the programmable amount of US\$ US\$ 22,430,400 was utilized, leaving the balance of US\$ 18,857,019.62.

Six months into its execution, FTI Funds have started to demonstrate its firm support to Guinea's PSE with future perspectives that reinforce the Government capacity to fulfill the right of the children of Guinea to a quality education.

¹ Document de la Stratégie de Réduction de la Pauvreté Intérimaire (2010-2011). December 2010.

LIST OF ACRONYMS

AFD	Agence Française de Développement
CEC	Centre d'Encadrement Communautaire (Community Education Centre)
CRD	Communauté Rural du Développement (Rural Development Community)
DCE	Direction Communal de l'Enseignement (Communal Direction of Education, equivalent of DPE for the urban communes of Conakry)
DPE	Direction Préfectoral de l'Enseignement (Prefectural Direction of Education)
DSEE	Délégué Scolaire de l'Enseignement Élémentaire (School Delegation for Elementary Education)
FTI	Fast Track Initiative
GiZ	Deutsche Gesellschaft für Internationale Zusammenarbeit (German Technical Cooperation)
IRE	Inspection Régionale de l'Education (Regional Inspection of Education)
KfW	Kreditanstalt für Wiederaufbau (German Development Bank)
PAAB	Plan d'Action Annuel Budgétisé (Annual Budget Action Plan)
PAE	Plan d'Amélioration d'Ecole (School Improvement Plan)
PSE	Programme Sectoriel Education (Education Sector Programme)
SNIES	Service National des Infrastructures et des Equipments Scolaires (National Service for School Infrastructure and Equipment)
TFP	Technical and Financial Partners

1. COUNTRY AND EDUCATION SECTOR CONTEXT

1.1 Country Profile

Guinea, a West African country covers 245,847 km² and borders in the north, Senegal and Guinea Bissau; in the south, Liberia and Sierra Leone; in the west, the Atlantic Ocean; in the east, Mali and part of Ivory Coast; and in the south–East, Ivory Coast. In 2008, the population of Guinea was estimated at 10,793,304, with an overall population density of 39 inhabitants per km², 70 per cent of which live in the rural areas and 30 per cent in urban centres.

Guinea is divided into four natural regions characterized by their differences in terms of climate, the vegetation, and the people living conditions: the lower Guinea in the West also known as the coastal area; the middle Guinea in the North; the upper Guinea in the East side of the country; and the Forest Guinea in South. On the administrative level, Guinea is divided into 8 administrative Regions; 38 Prefectures 5 of which in Conakry (called Communes Urbaines); and 303 Rural Development Communities (CRD) at sub-prefectural level.

On the economical level, Guinea remains among the bottom poor despite its enormous agricultural and mineral potential. Today, more than 53 per cent of the people live below the poverty line among which 8.2 per cent are in extreme poverty (2007). The magnitude of poverty is even higher in rural areas with 63 per cent of the people living below the poverty level.

On the political front, the final results of the Presidential election were announced in December 2010 and the new President and the Government have been installed. The state of emergency was lifted and the provision of social services including school classes returned to their normality in January 2011. Thirty-seven new Ministers have been nominated among which four concerning education sector; Regional and Prefectoral authorities wait for their (re)nomination.

1.2 Education Sector in Guinea

The Sector-Wide Approach (SWAp) in the Education Sector in Guinea was materialized when the Education Sector Programme (PSE) 2008-2015 was adopted in 2008, with common basket funds composed of: Fast Track Initiative (FTI) Catalytic Funds (68%; US\$ 117 million), KfW (19%) and AFD (13%). However, the disbursement of these funds had been blocked due to political instability prevailing in Guinea since the coup of December 2008.

In the meantime, primary education indicators have been staggering or declining since 2007. For instance, the gross enrollment rate (GER) has staggered from 78.6 per cent in 2006/07 to 78.3 per cent in 2009/10; gender parity index (GPI) worsened from 0.83 to 0.81; achievement rate declined from 59.2 per cent to 56.6 per

Key Data on Education in Guinea (2010)

- 7,719 primary schools with 30,343 classrooms and 33,800 teachers for 1,454,425 pupils (651,024 girls)
- Public-private school ratio at primary level: 79%-21%
- Gross primary enrollment rate: 78.3% (Girls 70.2%)
- Average classroom size: 48 pupils
- Repetition rate: 17.0% (Girls 18.4%)
- Completion rate: 56.6% (Girls 45.1%)
- Gender Parity Index (GPI): 0.81
- Children aged 3-6 enrolled in pre-school: 7.5%

cent; and the repetition rate increased from 9.1 per cent to 17.0 per cent during the same period. Moreover, these declines in the access and quality of education service hit more severely girls and the population in rural areas, exacerbating the disparity and exclusion in the education sector.

Following the delay in the implementation of the Education Sector Programme due mainly to the political situation, the FTI funds have been restructured twice, first at a meeting held in Dakar in March 2010, then on the occasion of the meeting held in Washington, D.C. in May 2010. As a result of these discussions and the Technical and Financial Partners (TFPs²)' advocacy for the first disbursement, the FTI funds were restructured to a total of US\$64 million, among which US\$ 24 million was allocated to UNICEF as a Supervising Entity while US\$ 40 million will be transferred to the Government of Guinea. Currently, the Education Sector Programme has been revisited by the Ministry of Education with the support of TFPs, based on the recommendations made during the Education Sector Review in late January 2011.

2. PROJECT DESCRIPTION

2.1 Objectives

The overarching objective of the project financed through FTI is to contribute to the implementation of the Education Sector Programme (PSE) of Guinea with the goal of reaching universal primary education through enhanced access and quality in the education sector.

Specific objectives for 2011 are:

- **Support to education administration at decentralized level:** 8 Regional Inspections of Education (IRE) and 38 Prefectural Directions of Education (DPE) are able to elaborate and implement Annual Budgeted Action Plans (PAAB);
- **Subvention to schools and DSEE:** 100% of public primary schools elaborate and implement School Improvement Plan (PAE); 416 DSEE are capable of rendering supervision to all schools and in-service teacher training;
- **Primary Education:** 991 classrooms are constructed, of which 270 completed, equipped and used in 2011, directly benefitting 44,000 pupils;
- **Early Childhood Education (ECD)/ Pre-school:** 60 classrooms of 30 Community Education Centers (CECs) are constructed in the benefit of 2,400 children;
- **Non-formal education/ Literacy:** 50,000 youth and adults undergo literacy programme.

2.2 Project Components, Implementation Period, Coverage and Partners

Based on the three domains of priorities identified in the PSE—access, quality and management, — the FTI Funds support five key components as described in Table 1 below.

² Technical and Financial Partners (TFPs) are represented by GiZ (sector lead), KfW, AFD, World Bank, UNICEF and NGOs represented by Plan Guinea.

Table 1. Project Components, Budget, Implementation Period, Coverage and Partners

	Component	Budget, USD	Implementation Period	Coverage	Execution Agency and Major Partners
1	Support to education administration at decentralized level (8 IREs & 38 DPEs)	2,179,000	1 year	National	Gov't
2	Subventions to schools and DSEE	1,493,000	1 year	National	Gov't
3	Construction and equipment of 991 classrooms and WaSH facility at primary level	16,779,000	2 years	15 Prefectures	Gov't, PLAN Guinea
4	ECD: Construction of 60 classrooms at pre-primary level and capacity development of ECD educators	1,207,000	2 years	14 Prefectures	Gov't, PLAN Guinea
5	Literacy	772,000	2 years	16 Prefectures	NGOs
	<i>TOTAL</i>	<i>22,430,000</i>			

3. RESULTS

During the reporting period, following progress was made.

3.1 Support to Regional Inspections of Education (IRE) and Prefectural Directions of Education (DPE)/ Communal Direction of Education (DCE)

- ✓ **Key result: 100 per cent of IREs and DPE/DCEs (8 IREs and 38 DPE/DCEs) elaborated Annual Budgeted Action Plans, of which 74 per cent (6 IREs and 28 DPE/DCEs) have started implementing the Plans through FTI funds.**
- 210 education administrators at decentralized level trained in the elaboration of Annual Budgeted Action Plan (PAAB);
- Forty-six Annual Budgeted Action Plans elaborated at prefectural and regional levels, putting emphasis on the capacity building of IREs and DPE/DCEs, as well as the reinforcement of supervision and guidance by IREs and DPE/DCEs to school directors and teachers through training of school directors, teachers school committee members (refer to Table 2);
- Fifty-eight indicators to measure and monitor the progress and results of 15 types of activities under PAAB developed and validated in view of their contribution to PSE and its 105 indicators (see Annex for the 58 indicators);
- Thirty-eight vehicles ordered for 38 DPE/DCEs for supervision and coordination were handed over to the Ministry of Education on 26 January with the presence of three Ministers, UNICEF Regional Director for WACRO, UNICEF Guinea Representative and the partners represented by the GiZ, the education sector lead.

Table 2. Level of Payments made in support for PAAB by Region

IRE	Budget	Total payment made	Percent paid	Pending payment*
IRE Faranah	500,000,000	437,110,725	87.4	28,126,500
IRE Mamou	400,000,000	273,670,350	68.4	67,435,600
IRE N'Zerekore	700,000,000	231,256,000	33.0	456,918,500
IRE Boke	600,000,000	468,096,590	78.0	104,150,500
IRE Kindia	600,000,000	549,190,700	91.5	0
IRE Conakry	600,000,000	549,271,500	91.5	0
IRE Labe	600,000,000	0	0.0	617,976,150
IRE Kankan	600,000,000	0	0.0	602,294,000
	4,600,000,000	2,508,595,865	54.5	1,876,901,250

* Includes the amount waiting to be paid in the beginning of March with the new exchange rate. IRE Labe and Kankan had not received payment so far because of the delay in liquidating prior Cash assistance.

3.2 Grants (Subventions) to primary schools and School Delegations of Elementary Education (DSEE)

- ✓ **Key result: All primary schools in the country were provided with the revised Implementation Guideline on the Subventions to Schools and DSEE (“*Procédure de Mise en Oeuvre des Subventions aux Ecoles et aux DSEE*”), and elaborated School Improvement Plan (PAE).**
- All public primary schools have elaborated School Improvement Plan (PAE), and 416 DSEE elaborated an annual plan for school visits and in-service teacher training;
- Forty-eight IREs and DPE/DCEs assisted in the elaboration of consolidated annual budget to support DSEE’s school inspections and in-service teacher training;
- Financial and implementation monitoring mechanism of school grants revisited (disbursement to be made in March);
- An inventory of schools and pupils updated with the data from school year 2010-2011 and the amount of funds to be transferred adjusted accordingly.
- Note: The total number of schools for the school year 2010-2011 increased, pushing the total budget needed for school grants (subventions) beyond the initial budget of US\$1,001,000. Based on the discussion with the Government partner (DNEE), it was decided that the public schools be given priority over private or franco-arab schools to receive school grants, making the beneficiary schools 6,129 instead of 7,719 schools.

3.3 Literacy

- ✓ **Key result: Tendering for NGOs to implement the literacy project was launched.**
- Inventory of NGOs active in literacy programs in Guinea compiled;
- Terms of reference for NGOs that will implement literacy programs elaborated jointly with the Ministry of Literacy; tendering launched and bid submissions to be opened in late March;

- Implementation time table revised based on the discussion with the Ministry of Literacy as below.³

March 2011	Selection of NGO(s)
April 2011	Preparation of contract
May- Sept. 2011	Implementation of pre-literacy activities (baseline survey, identification of trainers and target population, elaboration of tools)
Oct. 2011- June 2012	Implementation of literacy program
July- September 2012	Post-literacy activity & evaluation

3.4 Construction of primary schools

- ✓ **Key result: The model school was built with UNICEF's programme fund and validated as a standard model for school constructions under the PSE's common basket funds by the TFPs; fourteen construction firms and two engineering firms were pre-selected.**



“Ecole Temoin”- a model school constructed with UNICEF regular programme funds in late 2010 in the outskirts of Conakry ©UNICEF/Guinea

- ✓ The pre-selected sites for school construction with priority to the prefectures which have lowest education indicators being verified for its suitability for construction and validated by the Government;
- ✓ Technical support received from the construction team of UNICEF Madagascar (1 Chief of Construction, 1 Technical Engineer) received (February 2011);
- ✓ The analysis of the 49 bid submissions completed for the construction of 270 classrooms (out of 600), waiting for the submission to the Contract Review Committee (CRC) and Local Procurement Authorization (LPA). Technical analysis was conducted jointly with the National Service for School Infrastructure and Equipment (SNIES) and National Coordination of PSE of the Ministry of Education;
- ✓ Two engineering firms pre-selected for the supervision of the construction work. Tendering re-launched for the additional firms based on the recommendation of UNICEF Copenhagen's Supply Division;

³ Given the delay in the start of the tendering and upcoming rainy season, the implementation schedule was revised as follow: instead of offering literacy program to 20,000 persons in the first year and 30,000 in the second year, 50,000 persons will begin the program right after the rainy season 2011 ends in October.

- ✓ Agreement signed with NGO PLAN Guinea in charge of the construction of 391 classrooms. The first quarterly meeting with PLAN Guinea held on 17 February 2011. PLAN Guinea has:
 - recruited 1 project manager, 4 control agents, and 9 community development agents;
 - signed agreement with construction supervising firm as well as three local NGOs specialized in community development;
 - organized 2-day launch of the project as well as 2-day orientation workshop with partner organizations and local authority;
 - continued with the sensitization of target communities.
- ✓ The implementation calendar revised (Table 3; detailed implementation plan in Annex 3).

Table 3. Revised implementation calendar for construction activities (i=initial; R=Revised)

Activities	2010			2011				2012			
	T2	T3	T4	T1	T2	T3	T4	T1	T2	T3	T4
<i>Phase 1 : First series of bidding and contracts</i>											
Phase 1 : Invitations to tender and procurement contracts	i	i	⇒	R	R						
Phase 1 : Execution of work			i	i	iR	iR	R				
Phase 1 : Provisional and final reception					i	i	iR	iR	R		
<i>Phase 2 : Awarding of next works</i>											
Phase 2 : Awarding of new contracts				i	iR	iR	i				
Phase 2 : Execution of work					i	i	iR	iR	iR	iR	
Phase 2 Provisional and final reception							i	i	i	iR	iR

3.5 Early childhood education

- ✓ **Key result: Construction sites and the standard model of CECs were validated.**
 - Thirty construction sites of Community Education Centres (CEC) identified and validated;
 - Execution of construction work postponed to the Phase 2 of construction activities given the delay in reaching an agreement on the model CEC with the Government partner;

4. IMPLEMENTATION CONSTRAINTS

- During the reporting period, the major constraint rested on the **political situation** of the country that inhibited timely implementation of activities as initially planned, requiring revisions of implementation calendar for most of the components as described above.
- The **low capacity** of the Government on result-based planning in particular at decentralized level and weak government mechanism of financial management and control present challenge on timely and efficient execution of activities, while FTI

deems to reinforce the capacity at all levels and fronts through the implementation of planned projects.

- Lack of reliable and up-to-date education statistics poses a challenge on using them to make realistic projections for future needs. Indeed, this difficulty necessitated the reduction of the number of schools receiving subventions by cutting all private or franco-arab schools as mentioned earlier, since the budget was underestimated to cover all existing primary schools in the 2010-2011 school year.
- The delay in Government's justifying Cash assistance of UNICEF has prevented two Regions from receiving further Cash assistance to support their PAABs since the beginning of 2011. This has been addressed with top priority.
- A timely distribution of vehicles designated for 33 DPEs and 5 DCEs has been impeded due to the recent restructuring of the Government one month after the official hand-over to the Ministry of Pre-University Education. The UNICEF Representative is due to meet with the Minister of Pre-University Education in the following week.

5. OPPORTUNITIES

Assuming the role of Supervising Entity of FTI Funds gives UNICEF an opportunity to leverage for human rights approach and advocate for the most excluded. This was demonstrated through the selection of school construction sites. FTI funds will support constructing classrooms in prefectures with lowest education indicators. In addition, it has been observed that FTI reinforces strategic partnership and joint governance at regional and global-level. Indeed, regular support from Regional Office, NYHQ and Copenhagen Supply Division is received through frequent video/telephone conferences, and technical support from Madagascar Office was received through the mission. At country-level, collaboration and coordination between the Government and TFPs was reinforced through regular meetings and video conferences.

6. FUTURE WORK PLAN

The immediate actions to be taken are:

- ✓ Disbursement of grants for IRE, DPE, DSEE and schools;
- ✓ Monitoring the implementation of PAAB;
- ✓ Submission of bid analysis to CRC and LPA of construction enterprises and firms in charge of the supervision of the construction work ;
- ✓ Release tender for water points with support from the UNICEF Water, Sanitation and Hygiene (WaSH) Section ;

Upon discussing with the Government partner (National Coordination of PSE), it was decided that the quarterly meeting with the concerned Ministries and TFPs to share the progress of activities funded by FTI Funds be organized. The first meeting is scheduled for the end of March.

The first phase of the construction work is expected to begin in mid-April, and will continue through the end of September 2011, with a slow-down during the rainy season (June-August) (Refer to Annex 2 and 3 for the annual implementation plans).

7. FINANCIAL UTILIZATION

To date, 15.93% or US\$ 3,573,380.38 of the programmable amount of US\$ US\$ 22,430,400 was utilized, leaving the balance of US\$ 18,857,019.62.

8. EXPRESSION OF THANKS

The Office as well as the Government partners express our sincere appreciation for the funds provided by the FTI. The FTI Funds helped restore the staggering support for the education sector in Guinea after two years. It is expected that the Funds serve as a “catalyzer” of additional funds to enhance education access and quality in Guinea towards meeting the EFA and MDG goals.

Annex 1 : List of PAAB Indicators

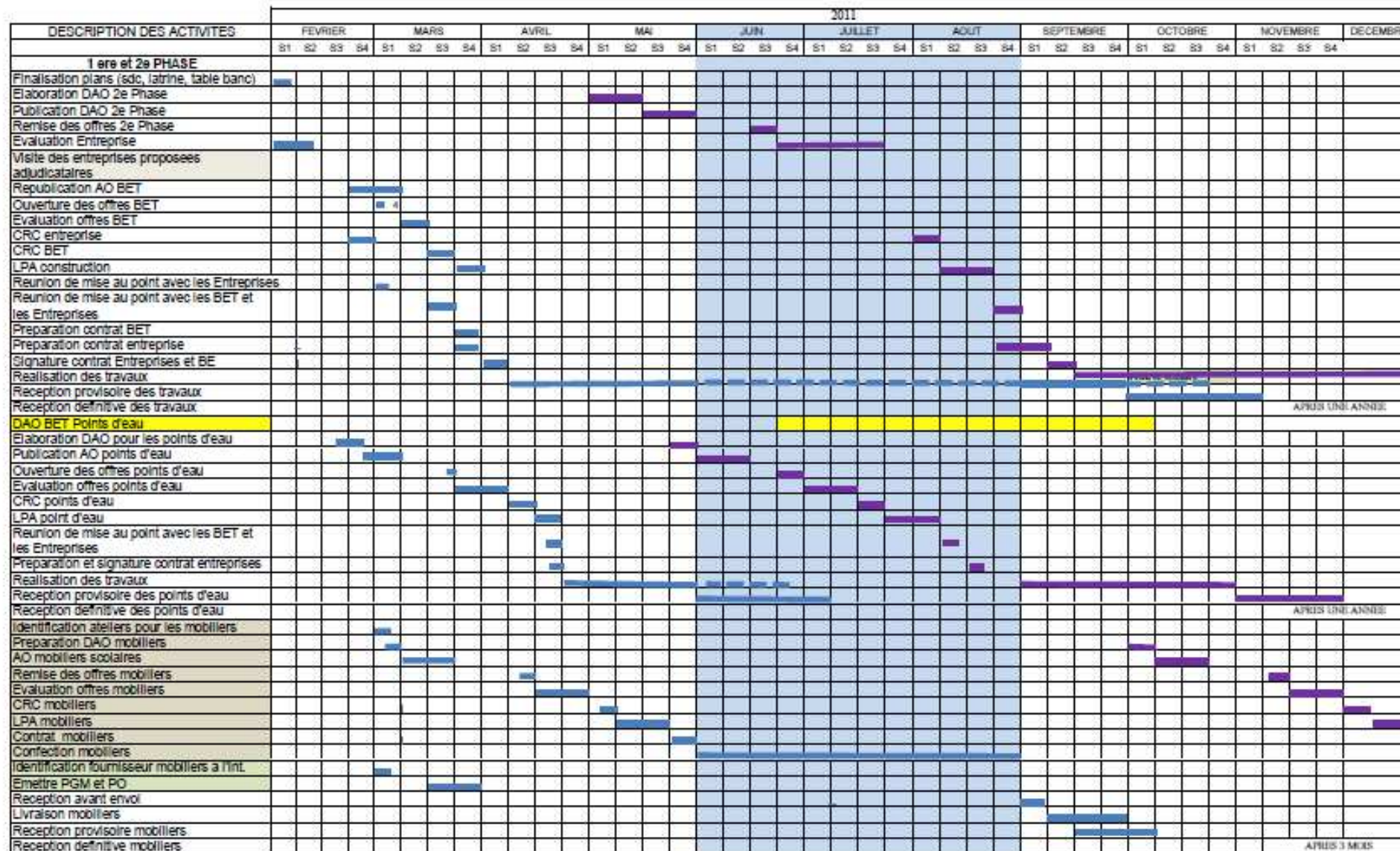
Types d'activités financées	N°	Indicateurs de processus
1. Suivi-évaluation, supervision pédagogique des enseignants du secondaire et du primaire, des Délégués de l'Enseignement Élémentaire (DSEE ¹ , des Chefs d'Établissements secondaires (CE) et des directeurs d'écoles primaires (DE)	1	Nombre d'enseignants supervisés/inspectés au primaire
	1a	Nombre d'enseignants supervisés/inspectés au CP
	1b	Nombre d'enseignants supervisés/inspectés au CE
	1c	Nombre d'enseignants supervisés/inspectés au CM
	2	Nombre d'enseignants supervisés/inspectés au Secondaire
	2a	Nombre d'enseignants supervisés/inspectés en maths au secondaire
	2b	Nombre d'enseignants supervisés/inspectés en français au secondaire
	2c	Nombre d'enseignants supervisés/inspectés en sciences physiques au secondaire
	3	Nombre d'enseignants supervisés/inspectés dans d'autres disciplines au secondaire
	4	Nombre de DSEE supervisés/inspectés
2. Suivi-évaluation, supervision pédagogique des centres d'éducation non formelle (Centres Nafa), des centres d'Alphabétisation et des Centres d'Education Communautaire (préscolaire)	5	Nombre de DE supervisés/inspectés
	6	Nombre d'écoles primaire visitées
	7	Nombre de visites/inspections pédagogiques effectuées
	8	Nombre de Centres Nafa visités
	9	Nombre de CEC visités
	10	Nombre de Centres alpha visités
3. Tenue des sessions des Comités Préfectoraux de Promotion de l'Éducation (CPPE ²) et des Comités Régionaux de Promotion de l'Éducation (CRPE ³)	11	Nombre d'animateurs supervisés
	12	Nombre de moniteurs supervisés
	13	Nombre d'alphabétiseurs supervisés
	14	Nombre de sessions tenues
	14a	Nombre de recommandations formulées avec échéanciers et responsabilités
	14b	Nombre de participants ayant pris part aux sessions
	14c	Nombre de participants du système éducatif ayant pris part aux sessions
15	Nombre de représentant des partenaires (ONG, syndicats, APEAE, etc.) ayant pris part aux sessions	

Types d'activités financées	N°	Indicateurs de processus
4. Formation des DSEE, DE, CE, à la collecte des données statistiques	16	Nombre d'élus locaux et représentants des autres services ayant pris part aux sessions
	17	Nombre de recommandations mises en œuvre
	18	Nombre de DSEE formés
5. Formation des DSEE, DE, CE et enseignants à la gestion des grands groupes	19	Nombre de Chefs d'établissements formés
	20	Nombre de Directeurs d'écoles formés
	21	Nombre de DSEE formés à la gestion des grands groupes
	22	Nombre de DE formés à la gestion des grands groupes
6. Formation des DSEE, DE et enseignants à la gestion des classes multigrades (GCM)	23	Nombre de CE formés à la gestion des grands groupes
	24	Nombre d'enseignants formés à la gestion des grands groupes
	25	Nombre d'enseignants formés à la GCM
7. Formation des Comités de Développement de l'Ecole (CDE) à l'élaboration des Plans d'Amélioration des Ecoles (PAE)	26	Nombre de DSEE formés à la GCM
	27	Nombre de DE formés à la GCM
	28	Nombre de CDE formés à l'élaboration des PAE
	28 bis	Nombre d'écoles ayant leur PAE
8. Organisation de cours de rattrapage pour les élèves de CM 2 et de BEPC	29	Nombre d'élèves du CM2 ayant bénéficié des cours de rattrapage;
	29 bis	Nombre de filles du CM2 ayant bénéficié de cours de rattrapage
	30	Nombre d'élèves de 10ème ayant bénéficié des cours de rattrapage;
	30 bis	Nombre de filles de 10ème ayant bénéficié de cours de rattrapage
	31	Nombre d'élèves admis à l'examen d'entrée en 7ème année
	31 bis	Nombre de filles admises à l'examen d'entrée en 7ème année
	32	Nombre d'élèves admis au BEPC
	32 bis	Nombre de filles admises au BEPC
9. Formation des APEAE, DE et	33	Nombre de personnes touchées

Types d'activités financées	N°	Indicateurs de processus
membres de CRD (Communautés Rurales de Développement) à la gestion administrative, cogestion de l'école	34	Nombre de personnes issues des APEAE formées à la cogestion de l'école
	35	Nombre de DE formés en gestion administrative
10. Mobilisation des communautés en faveur de la scolarisation des filles et/ou organisation de scolympiades	36	Nombre de campagnes de sensibilisation menées
	37	Nombre de Communautés villageoises touchées par les campagnes
11. Organisation de journées d'animation pédagogique et de leçons modèles	38	Nombre d'enseignants ayant pris part à ces journées
	39	Nombre de journées tenues
	40	Nombre de thèmes abordés
12. Formation des cadres à l'utilisation de l'outil informatique, à la planification et au management	41	Nombre de personnes formées en Word et Excel
	42	Nombre de personnes formées à l'utilisation des outils de planification
	43	Nombre de personnes ayant bénéficié de formation à l'exploitation des bases de données statistiques
	44	Nombre de personnes ayant bénéficié de formation en management
13. Formation des enseignants et maîtres à l'enseignement des disciplines fondamentales, à l'utilisation des programmes et à l'évaluation des enseignements/apprentissages	45	Nombre d'enseignants formés à l'exploitation des programmes d'enseignement des disciplines fondamentales;
	46	Nombre d'enseignants formés à l'enseignement des disciplines fondamentales
	47	Nombre d'enseignants formés aux techniques d'évaluation des enseignements et apprentissages
	48	Nombre d'élèves de 6 ^{ème} année ayant une moyenne supérieure ou égale à 7 sur 10 en français
	49	Nombre d'élèves de 6 ^{ème} année ayant une moyenne supérieure ou égale à 7 sur 10 en calcul
	50	Nombre d'élèves de 4 ^{ème} année ayant une moyenne supérieure ou égale à 7 sur 10 en français
	51	Nombre d'élèves de 4 ^{ème} année ayant une moyenne supérieure ou égale à 7 sur 10 en calcul
14. Subventions aux écoles	52	Nombre d'écoles publiques ayant bénéficié de subventions
	53	Nombre d'écoles ayant un PAE

Types d'activités financées	N°	Indicateurs de processus
	54	Nombre d'écoles ayant un PAE mis en œuvre
15. Subventions aux DSEE	55	Nombre de DSEE ayant bénéficié de subventions de fonctionnement et de mise en œuvre de leur plan de formation des maîtres
	56	Nombre d'écoles ayant bénéficié de l'appui de la DSEE pour l'élaboration de leurs PAE
	57	Nombre de visites annuelles du DSEE aux écoles
	58	Nombre d'enseignants ayant bénéficiés du programme de formation continue

Annex 3: Implementation Plan, Construction activities- 2011



■ 1ere Phase
■ 2e Phase

APRES UN ANNEE

APRES UN ANNEE

APRES 3 MOIS

Annex 4 : Financial Utilization Report

	Type	Requisition Reference	Issue Date	Description	Requisition Amount
		Object of Assistance :	0249-GUINEA		
		Donor :	U99934 World Bank - Washington D.C. Att. M William Marke,		
		PBA Reference :	SC/2010/0648-00		
		PBA Amount :	22,430,400.00		
		GAC :			
		Conditions :	PBA Expiry Date : 31/12/2012		
Programme : YE702 - 02. Education_FA2 : 95% des enfants dont la moitié sont des filles ont acces a des services educatifs et d'evail de qualite					
AWP : 11 - 05 FTI: Améliorer l'accès aux secteurs d'éducation ciblés par les 6 objectifs de l'EPT, ainsi que la qualité de l'éducation offerte					
	Cash	GUIA/2011/00000191-0	31/01/11	Construction des salles de classes du primaire plus les points d'eau et latrines, Equipements des salles de classes du primaires par l'ONG Plan Guinea (voir Protocole d'Accord de Cooperation du 13 octobre 2010).	463,000.00
		GUIA/2011/00000192-0	31/01/11	Construction des Centres d'Encadrement Communautaires (CEC) et equipements par l'ONG Plan Guinea (voir Protocole d'Accord de Cooperation du 13 octobre 2010).	92,061.00
		GUIA/2011/00000196-1	31/01/11	Tenue de l'atelier de preparation des Indicateurs du Suivi evaluation du PSE	3,469.00
		GUIA/2011/00000197-0	31/01/11	Construction des salles de classes du primaire plus les points d'eau et latrines, Equipements des salles de classes du primaires par l'ONG Plan Guinea (voir Protocole d'Accord de Cooperation du 13 octobre 2010).	463,000.00
		GUIA/2011/00000198-0	31/01/11	Construction des salles de classes du primaire plus les points d'eau et latrines, Equipements des salles de classes du primaires par l'ONG Plan Guinea (voir Protocole d'Accord de Cooperation du 13 octobre 2010).	463,000.00
		GUIA/2011/00000199-1	31/01/11	Construction des salles de classes du primaire plus les points d'eau et latrines, Equipements des salles de classes du primaires par l'ONG Plan Guinea (voir Protocole d'Accord de Cooperation du 13 octobre 2010).	463,246.00
Cash Sub-total					1,947,776.00
	Travel	GUIA/2011/00000190-0	31/01/11	Accompagner Mamadou Gouraissiou Diallo et les Consultants Magaches pour la visite de l'Ecole témoin dans la Préfecture de Coyah (Koriakhory)	1.00
Travel Sub-total					1.00
AWP Sub-total					1,947,777.00

	Type	Requisition Reference	Issue Date	Description	Requisition Amount
AWP : 11 - 11- Projet PSE / FTI					
	Cash	GUIA/2010/00001611-1	08/11/10	Suivi-evaluation des etablissements secondaires de quelques DSEE et DE (Mamou, Dalaba et pita)	9,063.00
		GUIA/2010/00001613-1	08/11/10	Evaluation des maitres en situation de classe, des Directeurs d'Ecoles (DE) et des Delegates Scolaires de l'Enseignement Elementaire (D.S.E.E) de Mamou, Dalaba et Pita	14,960.74
		GUIA/2010/00001614-1	08/11/10	Suivi de 27 centres Nafa, Alphabetisation et de 14 Centres d'Encadrement Communautaires CEC	1,697.26
		GUIA/2010/00001615-1	08/11/10	Atelier de Formation des Proviseurs et Principaux de la Region de Mamou a la collecte et au remplissage des nouvelles fiches d'enquetes statistiques	1,406.27
		GUIA/2010/00001616-1	08/11/10	Promotion de l'implication des communautes dans leur partenariat avec les Lycees	2,130.80
		GUIA/2010/00001628-1	08/11/10	350 enseignants des Lycees et colleges sont appuyes, 1050 filles candidates au BEPC sont renforcees, 150 enseignants sont visites	14,577.26
		GUIA/2010/00001647-1	08/11/10	Formation de 265 Directeurs d'ecoles, chefs d'etablissements et 130 enseignants et 10 cadres de la DPE au remplissage des fiches d'enquetes statistiques, l'outil informatique, mise a niveau academique et professionnelle,	16,174.49
		GUIA/2010/00001648-1	08/11/10	Sensibilisation pour la scolarisation des enfants en ages d'aller a l'ecole et le maintien des filles dans prefectures de Beyla et de N'Zerekore	8,302.77
		GUIA/2010/00001649-1	08/11/10	Motivation des filles et organisation des cours supplementaires au CM dans les prefectures de Gueckedou et Lola	6,162.54
		GUIA/2010/00001651-1	08/11/10	Initiation de 10 cadres de l'IRE a l'outil informatique (sur le logiciel Word)	1,366.62
		GUIA/2010/00001661-0	15/12/10	Formations des cadres: DPE, DSEE, DE et enseignants de la DPE de Boffa et sous prefectures	5,085.71
		GUIA/2010/00001662-0	15/12/10	Formations et appuis, inspections pedagogique, encadrement, analyse, interpretations des resultats scolaires DPE Koundara et sous prefectures	14,577.25
		GUIA/2010/00001663-0	15/12/10	Supervision pedagogique de la rentree scolaires 2010-2011, inspection administrative, pedagogique, controle, suivi de l'installation des eleves et formations dans les 5 DPE de la region	7,626.02
		GUIA/2010/00001668-0	15/12/10	Formation academique des enseignants et professeurs, encadrement rapproche, supervision pedagogique DPE de FRIA, IRE de Boke	13,467.93
		GUIA/2010/00001669-0	15/12/10	Formation des cadres DPE, DSEE, DE, enseignants, inspections pedagogiques, supervision des centres NAFA et alphabetisation DPE de Boke	14,317.06

		Type	Requisition Reference	Issue Date	Description	Requisition Amount
			GUIA/2010/00001758-0	17/12/10	Renforcer les capacites de 2710 enseignants, organiser des cours supplementaires pour 1050 eleves des classes d'examen (6em et 10 Annee), initiation des cadres DPE a l'informatique, format 30 APPEAE et 25 mmbres c communal pilotage de Ratoma, IRE Conakry	65,491.47
			GUIA/2010/00001760-0	16/12/10	Formation, supervision et suivi des DSEE, DE et Enseignants: Au niveau de la DPE de Gaoul, IRE de Boke	12,237.41
			GUIA/2010/00001761-0	16/12/10	Controle des activites des DPE, inspection pedagogique et administrative de 150 professeurs et 40 chefs d'Etablissements, formation de 18 cadres de 5 DPE charges de statistiques a l'exploitation des bases de donnees statistiques (IRE de Kindia)	13,877.55
			GUIA/2010/00001762-0	16/12/10	Encadrement rapproche de 200 enseignants du primaie, de 100 professeurs, formation de 12 DSEE, 73 DE et chefs d'etablissement en planification et gestion des donnees statistiques, sensibilisation des comtes sur les NAFA/CEC et missions d'inspection	12,796.79
			GUIA/2010/00001763-0	17/12/10	Inspection pedag de 500 enseignants de l'elementaire, formation de 127 enseignants CE/CM en grammaire, suivi des d'apprentissage NAFA, formation de 100 nouveaux enseignants, diffusion/appropriation du manuel de gestion: Kolente, Kindia c et Friguiagbe.	16,952.29
			GUIA/2010/00001764-0	16/12/10	Organisation de 2 missions d'inspection pedag, formation de 100 enseignants sur les pedagogies, organisation des cours de consolidation dans les cas d'installation des eleves dans les ecoles, suivi fonctionnement des c NAFA et CEC dans la pref Forecariah	12,870.26
			GUIA/2010/00001765-0	16/12/10	Formation: 16 DSEE et adjoints, 50 DE et 35 CE du second a la collecte, inspection pedagogique et admin de 8 DSEE, 100 DE et 200 maitr de la 1ere et 6e Annee, senisibilisat sur les CEC, suivi encadrmt pedag et admin de 35 CE et 200prof (DPE Dubreka)	13,070.41
			GUIA/2010/00001767-0	16/12/10	Formation 10 cadres de la DPE a l'utilisation de l'outil informatique, Inspection pedagogique et admin de 15 DSSE, 95 DE et 80 maitres de 6eme et 1ere Annee, suivi fonctionnement des centres NAFA/CEC, renforcement de 30 DSEE, 50 DE et 15 CE DPE Telimele	10,489.65
			GUIA/2010/00001780-0	16/12/10	Tenue de 3 sessions de CPPE dans la prefectures de Gueckedou, IRE de N'Zerkeore	1,704.45
			GUIA/2010/00001874-1	16/12/10	Subvention pour la formation et le fonctionnement de 45 DSEE de la Region de Faranah	0.00
			GUIA/2010/00001876-0	15/12/10	Formation des maitres coraniques sur le contenu de la CDE, l'utilisation du programme standard de formation des apprenants et les approches pedagogiques (DPE de Dabola)	4,776.02

		Type	Requisition Reference	Issue Date	Description	Requisition Amount
			GUIA/2010/00001877-0	15/12/10	Information et sensibilisation des communautés sur l'inscription à l'école de tous les enfants non scolarisés des foyers coraniques des préfectures de Dabola et de Dinguiraye	3,687.03
			GUIA/2010/00001878-0	15/12/10	Appui à 300 filles ayant des besoins spécifiques d'apprentissage par l'organisation des cours de rattrapage (DPE de Dinguiraye)	2,315.31
			GUIA/2010/00001879-0	15/12/10	Formation continue liée au renforcement de capacités des personnels administratifs de l'IRE en maîtrise des outils informatiques de base	1,052.48
			GUIA/2010/00001880-0	15/12/10	Suivi des DSEE, DE, Chefs d'Établissement et Enseignants en situation de classe dans quatre (4) préfectures de la région	3,924.49
			GUIA/2010/00001881-0	15/12/10	Contrôle du fonctionnement des Centres d'Alphabétisation, des centres NAFA et des Centres d'Encadrement Communautaires CEC dans les quatre (4) préfectures de la Région administrative de Faranah	3,274.34
			GUIA/2010/00001882-0	15/12/10	Évaluation de l'état d'exécution des programmes d'enseignement au niveau des classes de 10 ^{ème} Année et Terminales au niveau des collèges et Lycées	1,117.89
			GUIA/2010/00001883-0	15/12/10	Suivi du fonctionnement des écoles et services éducatifs préfectoraux avec l'appui aux DSEE dans le cadre du renforcement des capacités institutionnelles	5,344.02
			GUIA/2010/00001884-0	15/12/10	Supervision pédagogique et administrative des DSEE, DE et suivi des enseignants, IRE de Faranah	1,332.83
			GUIA/2010/00001885-0	15/12/10	Élaboration et mise en œuvre d'un plan de remédiation en français et calcul pour les enseignants ayant manifesté le besoin, chef lieu de la préfecture de Faranah	3,701.78
			GUIA/2010/00001886-0	15/12/10	Formation des DSEE, DE et Chefs d'Établissements du Secondaire à la collecte et au traitement des données statistiques, Chef lieu de la préfecture de Faranah	4,623.98
			GUIA/2010/00001889-0	15/12/10	Dotation de cinq cent (500) filles de familles démunies des écoles rurales de la DPE de Dinguiraye en fournitures scolaires (cahiers, boîtes mathématiques, ordoises, livres etc.)	2,303.21
			GUIA/2010/00001893-0	15/12/10	Formation des DSEE et DE aux techniques d'évaluation des apprentissages, Chef lieu de la préfecture de Faranah	1,930.17
			GUIA/2010/00001897-0	15/12/10	Formation de quatre vingt dix (90) Directeurs d'écoles et Chefs d'Établissements à l'évaluation des apprentissages, DPE de Dabola	2,330.17
			GUIA/2010/00001898-0	16/12/10	Inspection et encadrement pédagogique des enseignants en situation de classe, DPE Dabola	903.79
			GUIA/2010/00001899-0	15/12/10	Formation de 14 DSEE, 29 Chefs d'établissements et 55 Directeurs d'École en matière de collecte, traitement et diffusion des données statistiques, DPE de Kissidougou	2,052.54
			GUIA/2010/00001900-0	15/12/10	Formation des enseignants à l'utilisation des brochures programmes, aux méthodes et techniques d'enseignement et d'évaluation des apprentissages, DPE de Kissidougou	3,957.14

		Type	Requisition Reference	Issue Date	Description	Requisition Amount
			GUIA/2010/00001901-0	15/12/10	Premiere session du Comite Regional de Pilotage de l'Education (CRPE), Region de Faranah (lieu Kissidougou)	4,152.41
			GUIA/2010/00001902-1	15/12/10	Formaiton de 135 Enseignants et Directeurs d'Ecoles sur l'utilisation des programmes, des methodes et techniques d'enseignement et les procedures d'evaluation des apprentissages dans les chefs lieux des 4 prefectures de la region	7,289.58
			GUIA/2010/00001905-0	15/12/10	Formation des cadres des DPE de l'IRE de Faranah a l'outil informatique	9,207.14
			GUIA/2010/00001906-0	15/12/10	Controle et supervision des Activites des Direction Prefectorales de l'Education de la region de Faranah	3,560.50
			GUIA/2010/00001908-0	16/12/10	Suivi des centres d'Alphabetisation NAFA et PRE-SCOLAIRES, DPE DE BOFFA	937.39
			GUIA/2010/00001911-0	16/12/10	Renforcement des competences des DSEE et DE en encadrement rapproche des Enseignants, Chef lieu de la prefecture de Faranah	1,518.79
Cash Sub-total						365,699.00
		Supply	GUIA/2010/00000058-2	07/10/10	MOTORCYCLE	50,508.00
			GUIA/2010/00000201-0	08/10/10	VEHICLE TOYOTA	1,206,150.00
			GUIA/2010/00000233-0	11/10/10	IMPRESSIONS	3,246.38
Supply Sub-total						1,259,904.38
AWP Sub-total						1,625,603.38
Programme Sub-total						3,573,380.38
Total Allocation 22,430,400						Balance 18,857,019.62

Report Generated On: 28/02/11 06:10 PM